



| FLOOR PLAN      | BED/BATH       | HEATED<br>SQFT* | PRICE**                     |                                    |
|-----------------|----------------|-----------------|-----------------------------|------------------------------------|
|                 |                |                 | Includes Standard Home site |                                    |
| THE AUGUSTUS II | 3 Bed 2 Bath   | 1224            | \$129,999                   | 2 Car Garage                       |
| THE CYPRESS     | 3/4 Bed 2 Bath | 1256            | \$129,999                   | 2 Car Garage With Tandem Option    |
| THE PALACE      | 3 Bed 2 Bath   | 1305            | \$132,499                   | 2 Car Garage                       |
| THE RYLEE       | 3 Bed 2 Bath   | 1319            | \$134,999                   | 2 Car Garage                       |
| THE KINGSTON    | 3 Bed 2 Bath   | 1409            | \$137,499                   | 2 Car Garage                       |
| THE OAK II      | 3 Bed 2 Bath   | 1412            | \$139,999                   | 2 Car Garage W/Covered Rear Porch  |
| THE CAMELOT     | 4 Bed 2 Bath   | 1495            | \$142,499                   | 2 Car Garage                       |
| THE CRUSADE     | 3 Bed 2 Bath   | 1507            | \$149,999                   | 2 Car Garage                       |
| THE LIVE OAK    | 3 Bed 2 Bath   | 1600            | \$154,999                   | 2 Car Garage W/ Covered Rear Porch |
| THE BEATY       | 3 Bed 2 Bath   | 1636            | \$157,499                   | 2 Car Garage                       |

### Homes in Yauhanna Landing Overview

- ◆ Land and Homes Packages starting from \$129,900
- ◆ Waterfront and Perimeter Lots Available from .40 to 3/4 Of an Acre
- ◆ Impressive standard Features that most Builders don't include
- ◆ All of our homes come with warranties on appliances, structural defects, Extended Roofing Assurances, Quality and Efficient HVAC Equipment, and Increased Design Standards. All of these offering you Peace of Mind and a

### Community Overview

- ◆ Less than 12 Miles from Historical Downtown Conway and 25 Miles to Myrtle Beach
- ◆ Within minutes to local shopping, Tanger Outlets Stores, restaurants and attractions
- ◆ Close to Top Notch Health Care Facilities and Hospitals
- ◆ Low HOA Fee's
- ◆ Private Community Boat Landing and Boat and R.V. Friendly

For More information or to View Available Models

Please contact our Listing Agent

Skip Carrick (843) 458-5083





## Included Features

### Exciting Exteriors

- Front Entry 2 Car Garages with Opener and remote
- Maintenance Free Premium Double "Dutch lap Vinyl Siding
- Maintenance Free Soffits and Fascia
- Low E Vinyl Windows-Insulated Glass with Screens
- Fiberglass Dimensional Roof Shingles w/ Upgraded Assurances (ask about our 50 Year Warranty)
- Steel Reinforced Overhead Garage Door
- Fully Sodded Yards (14 Pallet Max) Beautiful Landscaped Beds along Front of Home
- Exterior Weatherproof GFI Protected Electrical Outlets (Per Plan)
- Concrete Walkways and Driveways
- Covered Lanais and Patio's Per Plan
- Deadbolts on all Exterior Doors

### Designer Kitchens

- 30" Stainless Steel Self-Cleaning Range with Microwave and Dishwasher (Frigidaire)
- 42" Upper Profiled Maple Cabinets Standard with Brushed Nickel Knobs.
- Ice Maker Line for Your Refrigerator
- Deep Bowl Stainless Steel Sink with Detached Sprayer

### Relaxing Baths

- Decorator Vanity Cabinets with Cultured Marble Countertops with integral Bowl
- Executive Height Vanities in All Bathrooms
- Anti-Scald Shower Faucets
- 5' Extra Large Showers with Seat (s)
- Linen Closets per Plan
- Vented Exhaust Fans in All Baths
- Birch Cabinetry with Hardware

**TRADITION**  
S E R I E S



### **Energy Efficient Designs and Quality Construction**

- Fiberglass Six Panel Insulated Entry Door with Brushed Nickel Handle set and
- Insulated Low E Glass Single Hung Tilt-In Windows and Patio Doors With
- 14 SEER Central Air Conditioning w/ Energy Efficient Heat Pump
- Quick Recovery 50 Gallon Energy Efficient Hot Water Heater
- Washer and Dryer Hook-Up with Dryer Vent
- Fiberglass Insulation: Exterior Sidewalls R-13 or R- 19 (Per Plan)
- R-30 Ceiling Insulation Keeps you Cool in the Summer and Warm in the Winter
- All Walls Framed 16' Centers
- 200 Amp Electrical Service w/copper Wiring
- Extended 10 Year Warranty Option on HVAC Equipment
- Honeywell Digital Thermostat
- True Engineered Roof Truss System
- Space Conditioned Design and Accurate Load Calculation for HVAC Comfort

### **Classic Finishing Touches**

- Smooth Finish Drywall Ceilings Including Garage
- Garage attic Space floored for storage and Drop Down Stair Access.
- Vaulted and Tray Ceilings Per Plan
- Custom Flooring Package Per Plan
- Decorative Arched Interior Doors
- Distinctive Six Panel Entry Door from the Garage into the Home
- Brushed Nickel Hardware on All Interior Doors
- Walk-In Closets with Ventilated Closet Shelving Including 1 Double Row in Master Bedrooms
- Decorator Chrome or Brushed Nickel Glass Light Fixtures (Per Plan)
- White Toggle Switches
- Pre-Wired Phone and internet Locations – All Bedrooms and Kitchen (Per Plan)
- Pre-Wired Cable Locations – All Bedrooms and Living Area (Per Plan)
- Ceiling Fans in Master Bedroom and Living Rooms

### **Dependable Warranties**

One-Year Coverage on Materials and Workmanship\*\*

Termite Pre-Treatment Guarantee

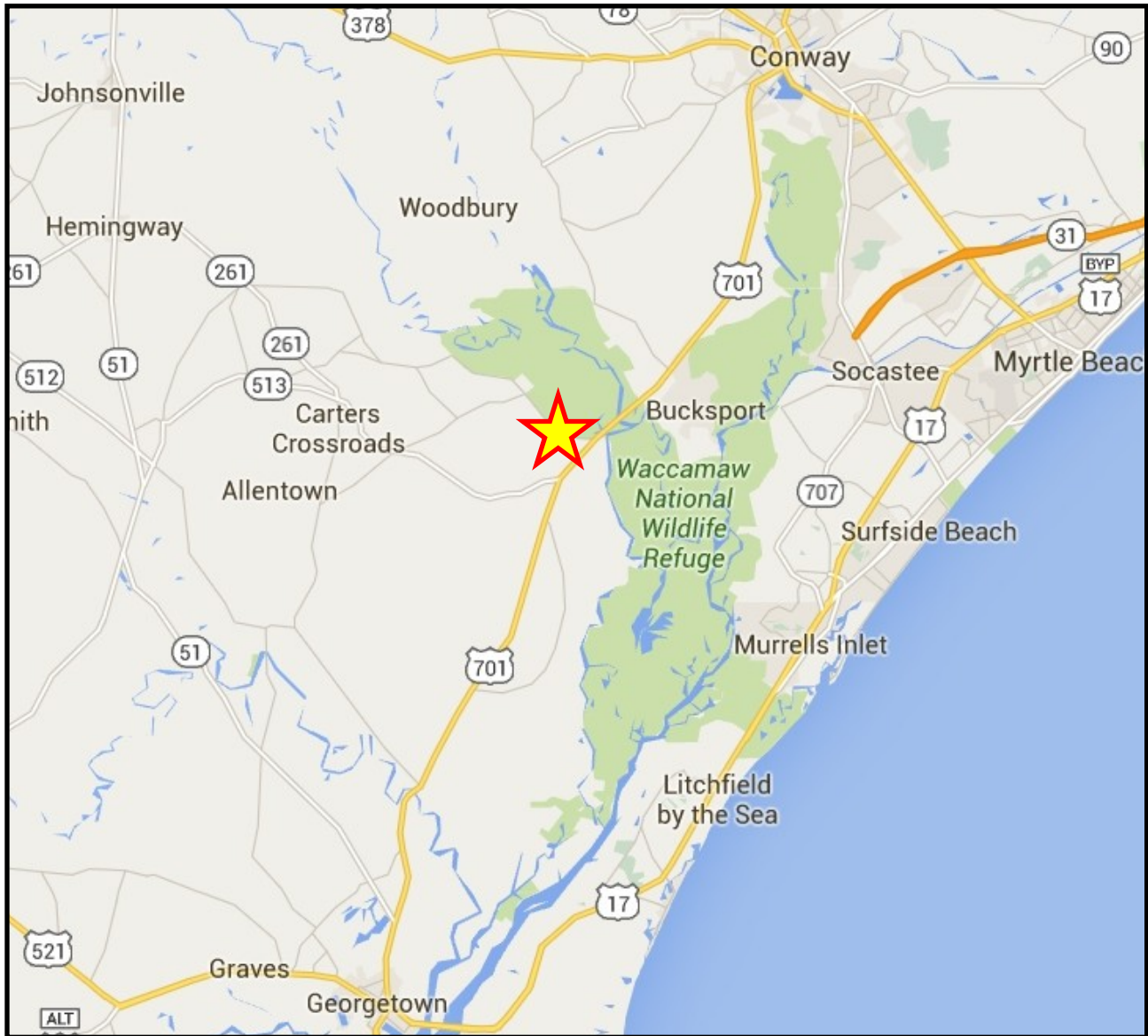
Full-Time Beverly Homes Customer Care Department

**TRADITION**  
S E R I E S



## Where Are We Located?

**Jackson Estates is Conveniently Located in Myrtle Beach!  
Close to Target, Myrtle Beach Mall, Myrtle Beach International, Market Common, 15+ Restaurants, Post Office,  
World Class Health Care Facilities.**

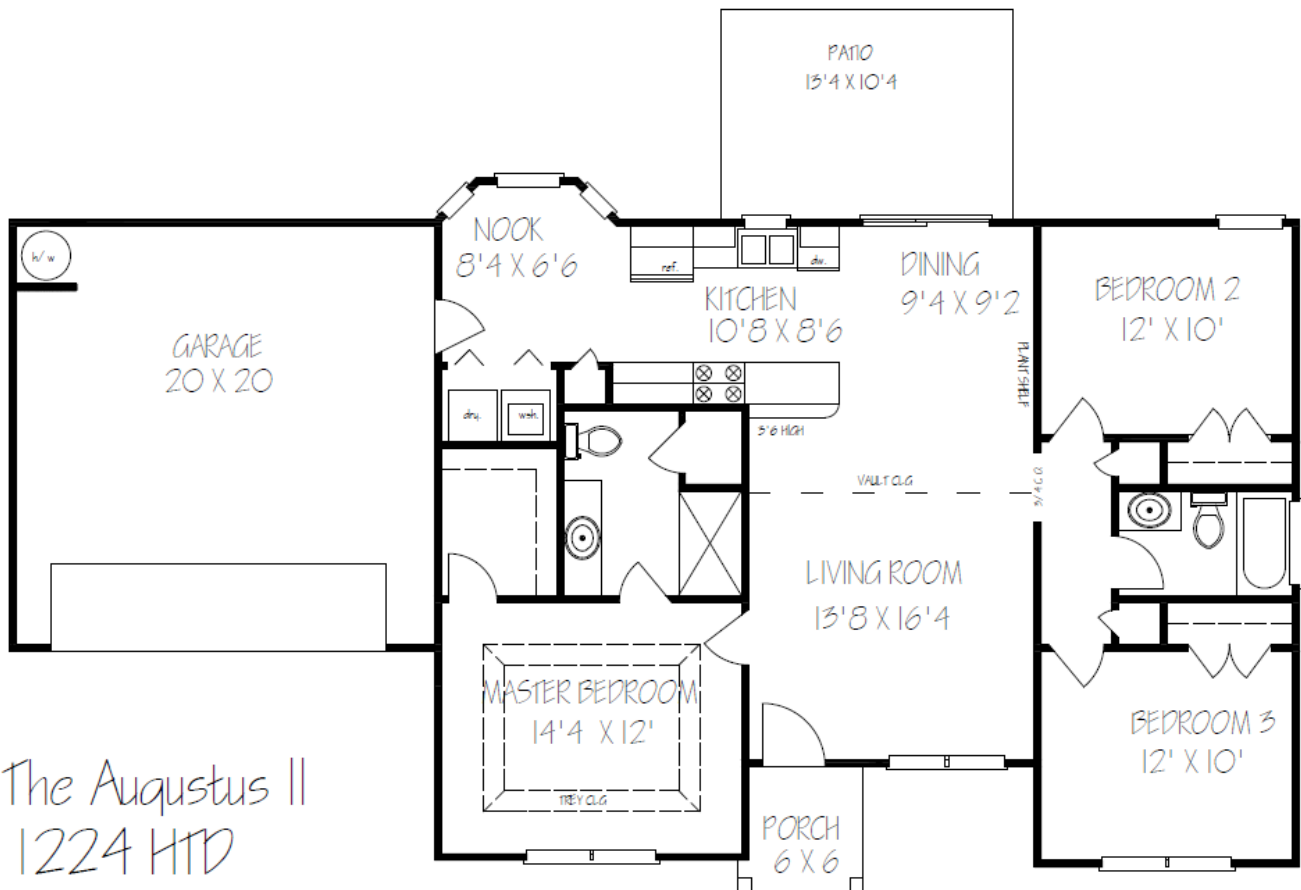


**Come Visit Our Sales Center today. Model Homes Open Daily.**

**Address :**



# Augustus II



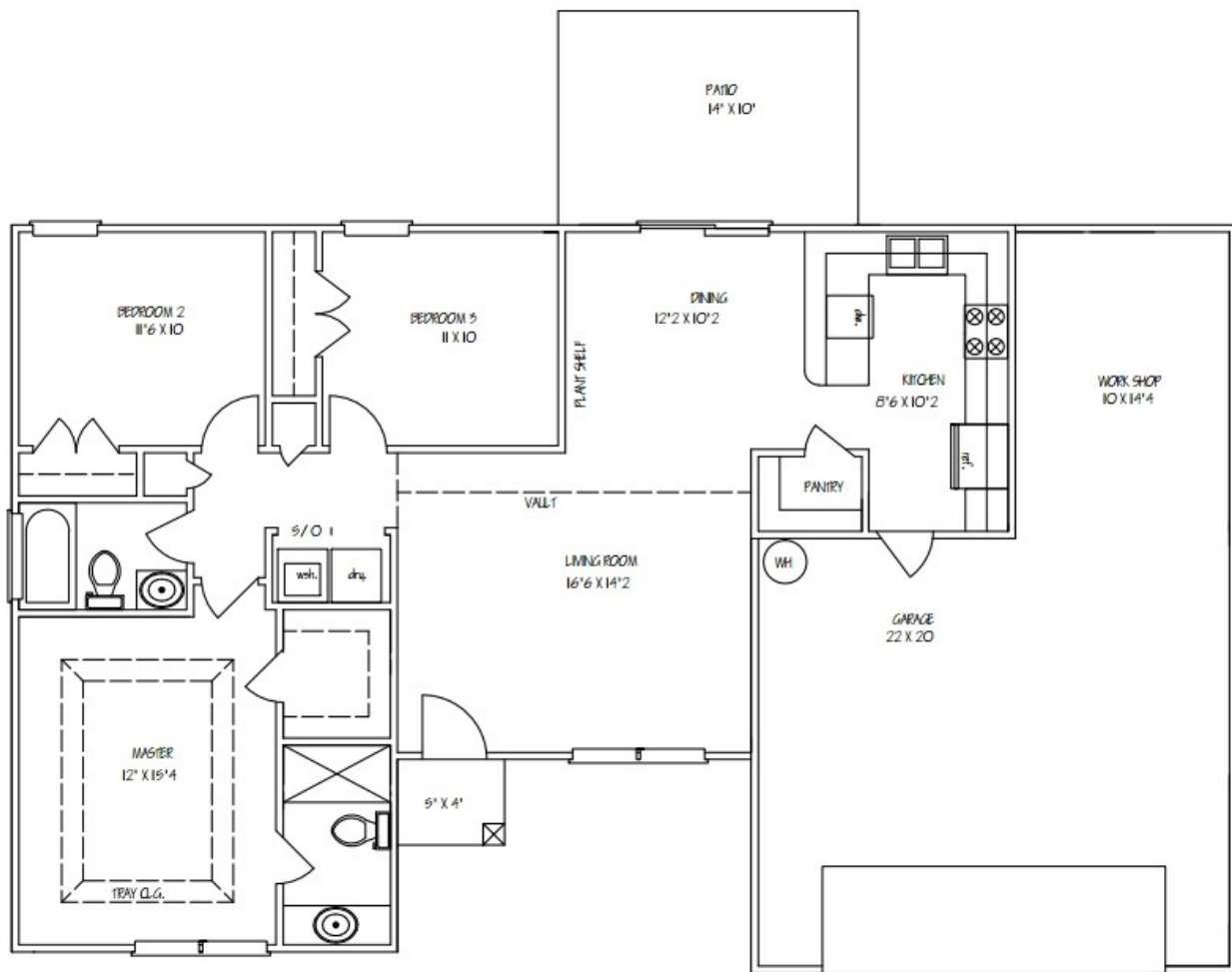
The Augustus II  
 1224 HTD  
 454 UHTD  
 1678 TOTAL

**TRADITION**  
 SERIES  
*Building on Tradition's*





# Cypress



The Cypress  
 1208 SQ. FT. HEATED  
 769 SQ. FT. UNHEATED  
 1977 SQ. FT. TOTAL

**TRADITION**  
 SERIES  
*Building on Tradition's*





# Palace

**Heated Sqft**            **1,305**  
**Unheated Sqft**        **493**  
**Total SqFt**            **1,798**



PALACE  
 1305 HTD  
 493 UHTD  
 1798 TOTAL

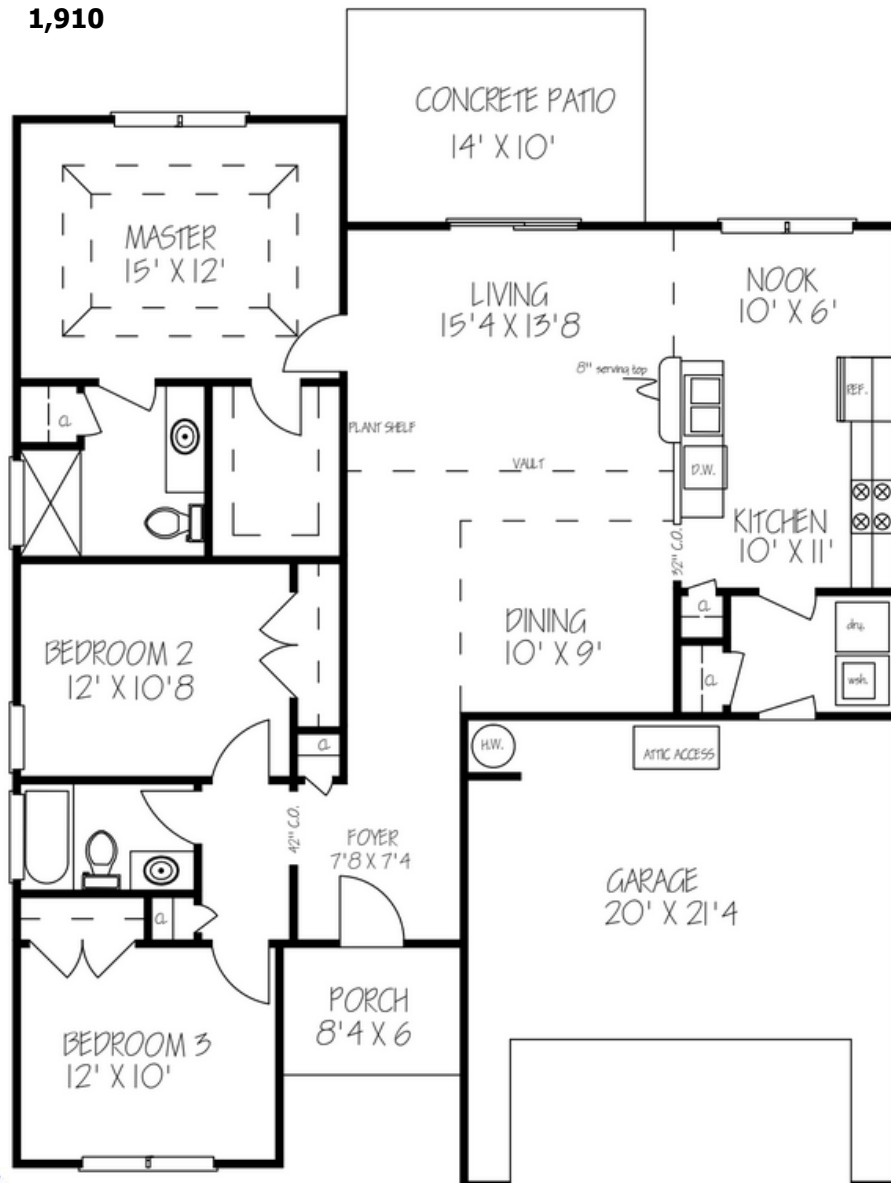
**TRADITION**  
**SERIES**  
*Building on Tradition's*





# The Oak

**Heated Sqft**            **1,4009**  
**Unheated Sqft**        **501**  
**Total SqFt**            **1,910**



**TRADITION**  
**SERIES**  
*Building on Tradition's*

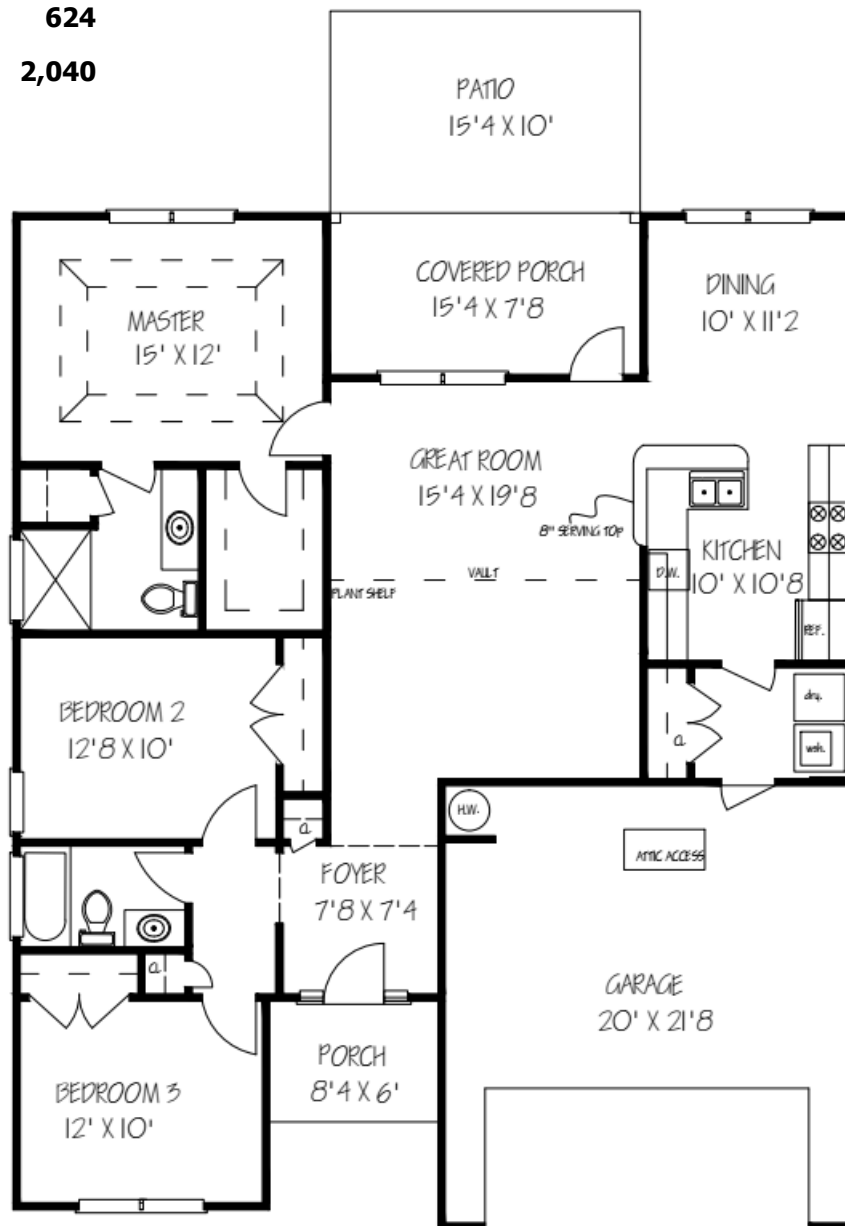






# The Oak II

**Heated Sqft**            **1,416**  
**Unheated Sqft**        **624**  
**Total SqFt**            **2,040**



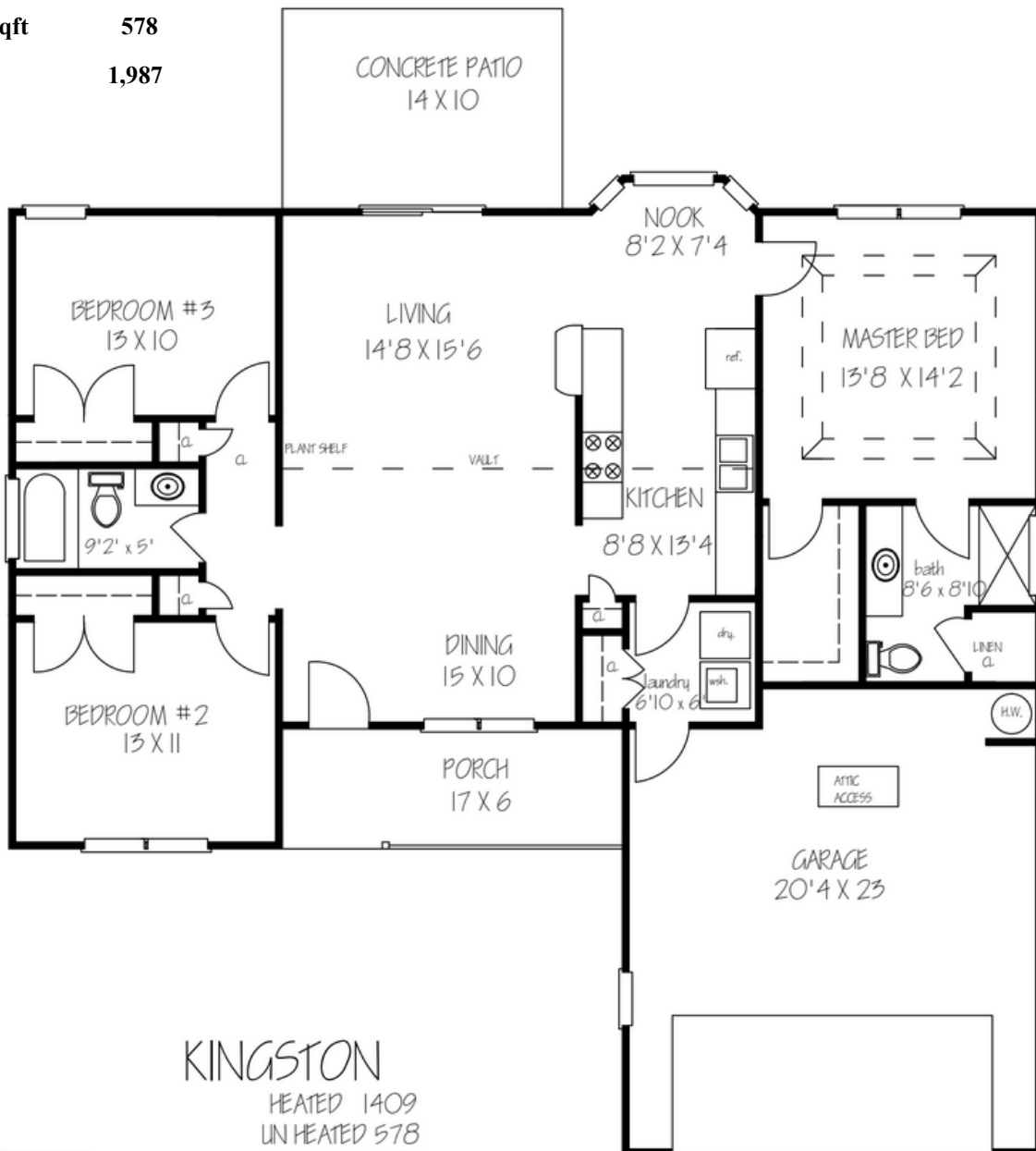
**TRADITION**  
**SERIES**  
*Building on Tradition's*





# The Kingston

**1st Floor Htd Sqft**    1,409  
**Unheated Sqft**        578  
**Total SqFt**            1,987



**KINGSTON**  
 HEATED 1409  
 UN HEATED 578  
 TOTAL 1987

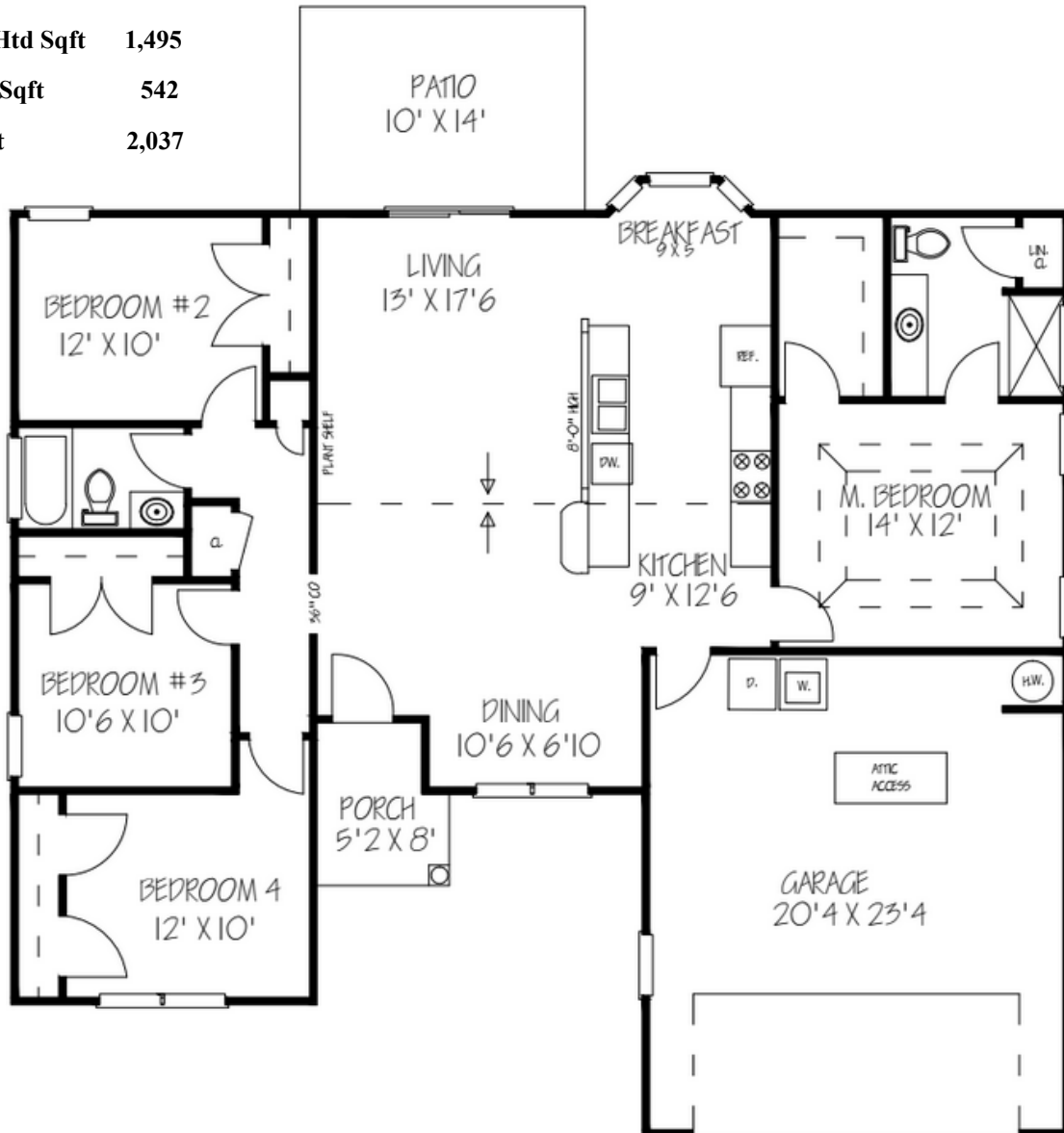
**TRADITION**  
**SERIES**  
*Building on Tradition's*





# The Camelot

**1st Floor Htd Sqft**    1,495  
**Unheated Sqft**        542  
**Total SqFt**            2,037



**CAMELOT**  
 1495 HEATED  
 542 UNHEATED  
 2037 TOTAL

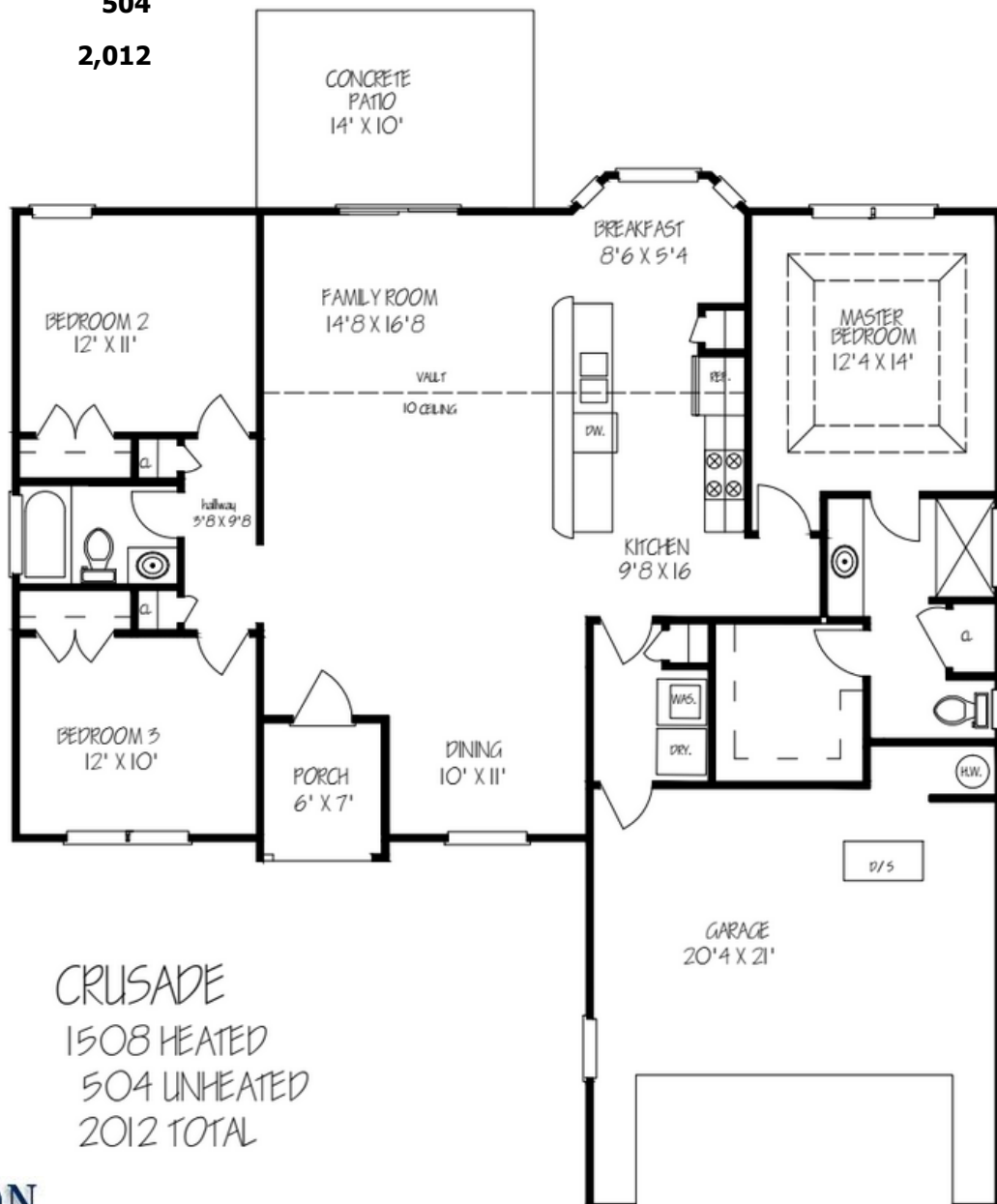
**TRADITION**  
**SERIES**  
*Building on Tradition's*





# The Crusade

**Heated Sqft**            **1,508**  
**Unheated Sqft**        **504**  
**Total SqFt**            **2,012**



CRUSADE  
 1508 HEATED  
 504 UNHEATED  
 2012 TOTAL

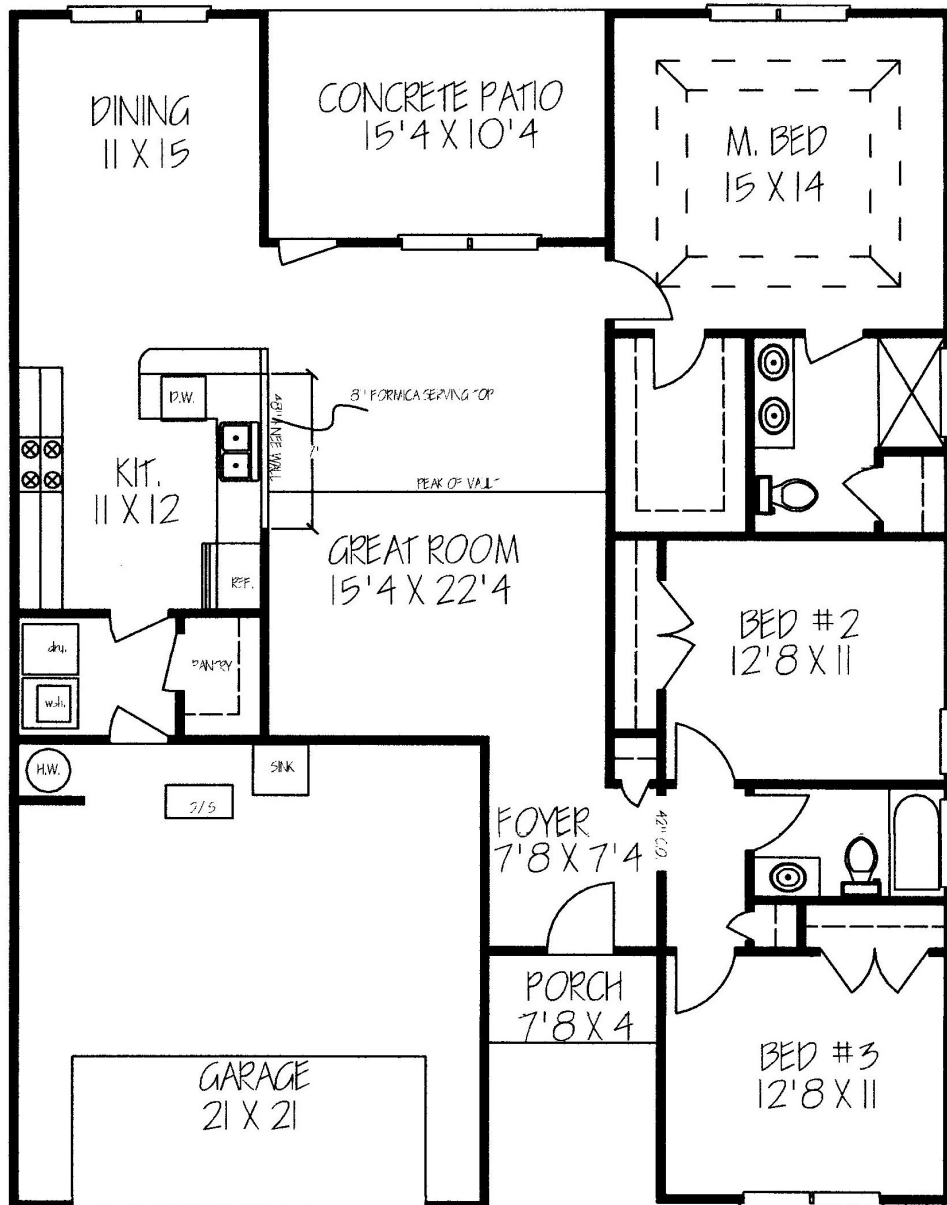
**TRADITION**  
**SERIES**  
*Building on Tradition's*





# The Live Oak

Htd Sqft 1,621  
 Unheated Sqft 648  
 Total SqFt 2,134



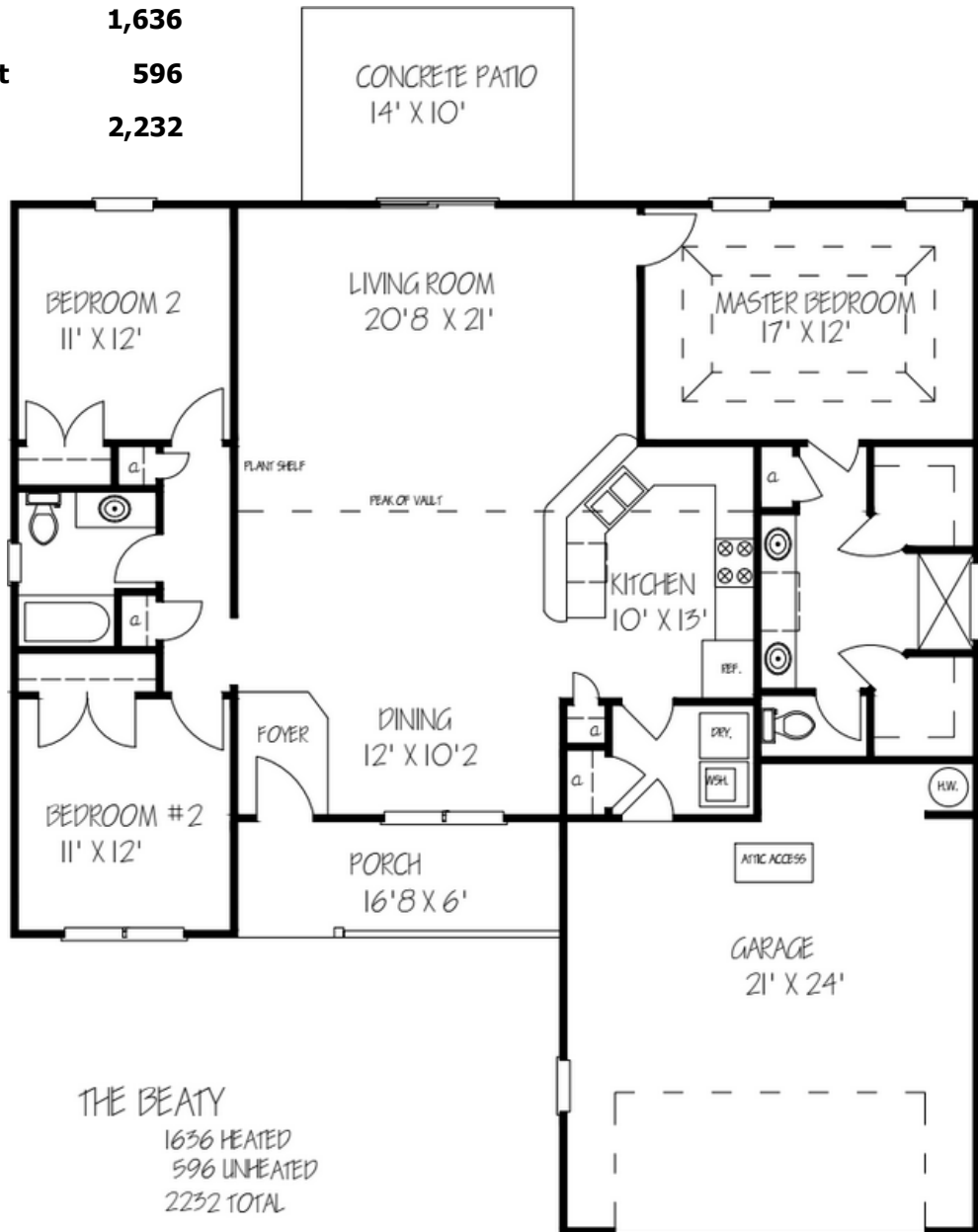
**TRADITION**  
 SERIES  
*Building on Tradition's*





# The Beaty

**Heated Sqft**            **1,636**  
**Unheated Sqft**        **596**  
**Total SqFt**            **2,232**



THE BEATY  
 1636 HEATED  
 596 UNHEATED  
 2232 TOTAL

**TRADITION**  
**S E R I E S**  
*Building on Tradition's*

